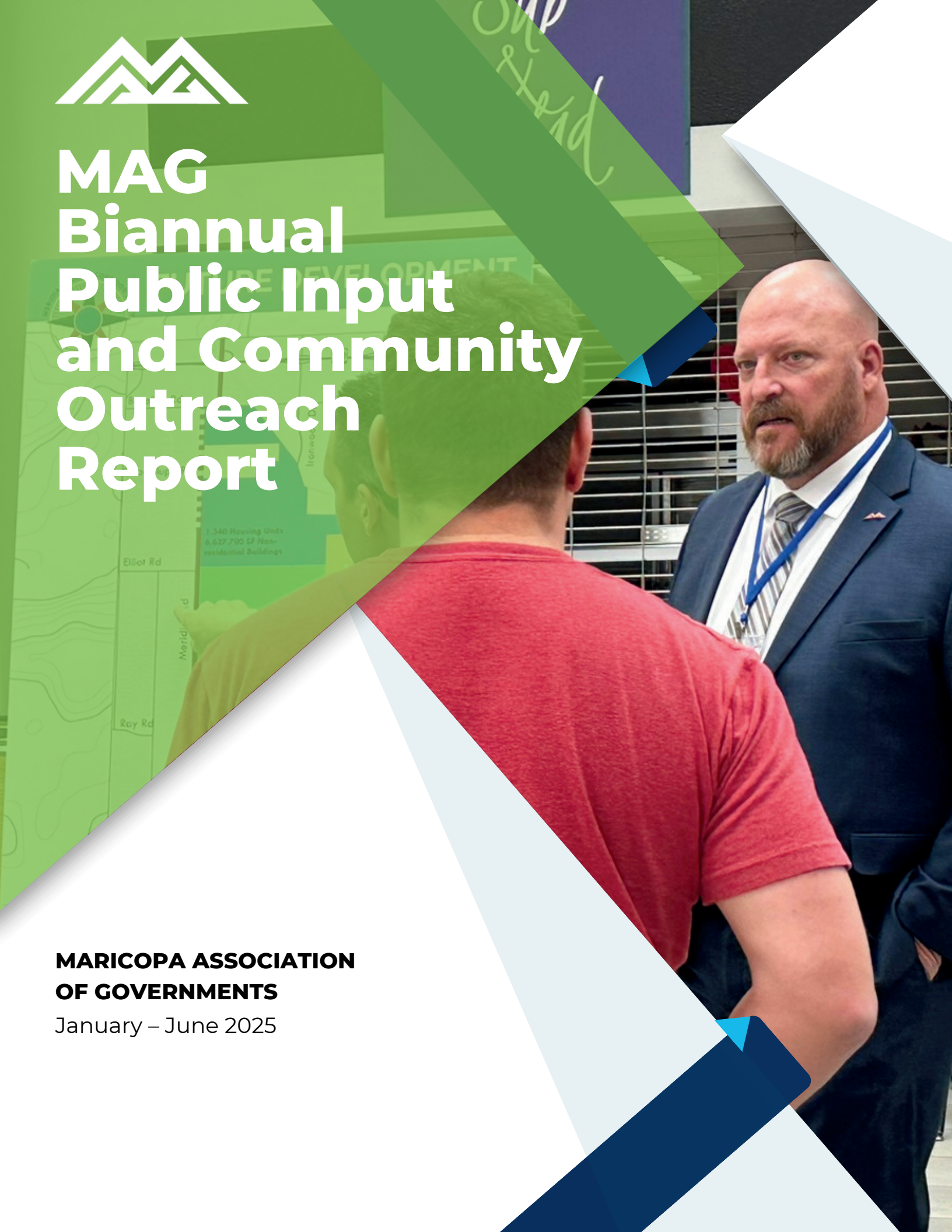




MAG Biannual Public Input and Community Outreach Report

**MARICOPA ASSOCIATION
OF GOVERNMENTS**

January – June 2025





Full Title VI Notice to the Public

The Maricopa Association of Governments (MAG) hereby gives public notice that it is the policy of the agency to ensure full compliance with Title VI of the Civil Rights Act of 1964, the Civil Rights Restoration Act of 1987 and related authorities and regulations in all programs and activities. Title VI requires that no person in the United States of America shall, on the grounds of race, color, or national origin, be excluded from the participation in, be denied the benefits of, or be otherwise subjected to discrimination under any program or activity for which MAG receives federal financial assistance. Additional protections are provided in other federal and state authorities for discrimination based on income status, religion, sex, disability, age, or sexual orientation.

Any person who believes they have experienced discrimination under Title VI has a right to file a formal complaint with MAG. Any such complaint must be filed with MAG's Title VI coordinator within 180 days following the date of the alleged discriminatory occurrence. For more information, or to file a complaint, please contact MAG at 602-254-6300.

Table of Contents

Executive Summary	2
Highlights & Key Findings	3
Engagement Strategy & Outreach Methods	4
In-Person Events	6
Virtual Engagement	7
Online Public Comments	8
News and Social Media Outreach	9
Descriptions of Key Outreach Events	10
Conclusion	20
Appendix	

Executive Summary

Over the past six months, the Maricopa Association of Governments (MAG) has made significant strides in connecting with the community and gathering valuable input to guide regional planning and decision-making. Through various public engagement efforts, MAG reached 568 people at in-person events. Additionally, over 651 residents participated in surveys and on comment maps. The agency's digital outreach also experienced impressive growth, with over 1.5 million social media impressions and a gain of 1,428 new followers. Media coverage played a significant role in keeping the public informed, with 886 mentions across various outlets, including television, radio, online, and print. MAG also received over 16 written public comments, contributing further to the region's input on planning and infrastructure.

The feedback gathered during this period revealed several key themes that continue to shape MAG's policies and priorities. Safety, accessibility and smart travel emerged as top concerns, with strong public support for studies aimed at improving mobility and connectivity along critical transportation corridors. In addition, the need for more robust bike and pedestrian infrastructure was a recurring theme in the active transportation studies, highlighting the region's interest in safer and more connected non-motorized options.

These insights are already shaping major MAG initiatives. Public input is directly informing transportation studies along key corridors, including Meridian Road, Interstate 10, US 60 (Grand Avenue), State Route 74 and Pima Road. As part of the Rio Reimagined initiative, MAG also gained valuable insight into what matters most to residents who live, work and recreate along the Salt River corridor.

Looking ahead, MAG remains committed to keeping the public at the center of the planning process on behalf of its member agencies. MAG will continue its outreach through surveys, community meetings and digital platforms to ensure that regional plans reflect the evolving needs and priorities of the people who call this region home.

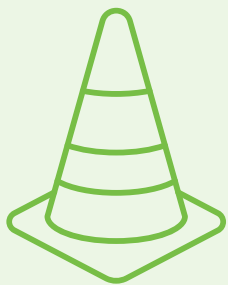
Highlights & Key Findings



Expansive and Growing Public Engagement

Highlight: MAG earned 1,563,437 social media impressions, a 100 percent growth from July to December 2024, and received 886 media mentions, a 20 percent growth from the same period.

Key Finding: Residents are actively seeking opportunities to participate in regional decision making, and MAG’s multi-channel approach through in-person, digital, and virtual engagement is effectively expanding awareness and participation.



Safety & Connectivity

Highlight: Public feedback strongly supported studies to improve mobility, safety, and connectivity on major transportation corridors like I-10, US 60 (Grand Avenue), and State Route 74.

Key Finding: There is broad regional sentiment on the importance of enhancing travel safety and access, reinforcing the importance for MAG’s ongoing corridor studies and transportation planning initiatives.



Quality of Life and Affordability

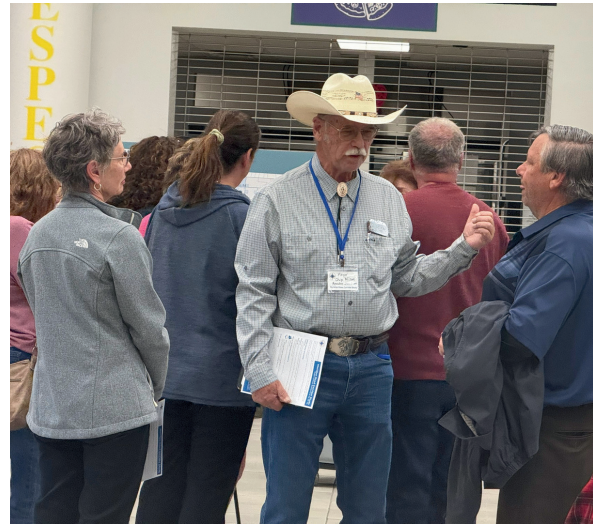
Highlight: Residents voiced concerns about noise, safety and congestion, especially in the North and Northwest Valley and areas experiencing rapid growth.

Key Finding: MAG’s planning efforts must continue to prioritize driver and pedestrian safety, quality of life and commute times.

Engagement Strategy & Outreach Methods

Public participation is key to the region's planning process. We need the community's help to plan projects that provide benefits to the region and meet the wide-ranging needs of our residents.

Twice a year, MAG produces this summary of input received for the preceding six months and shares this information with policymakers to ensure public priorities are shared and considered throughout the decision-making process.

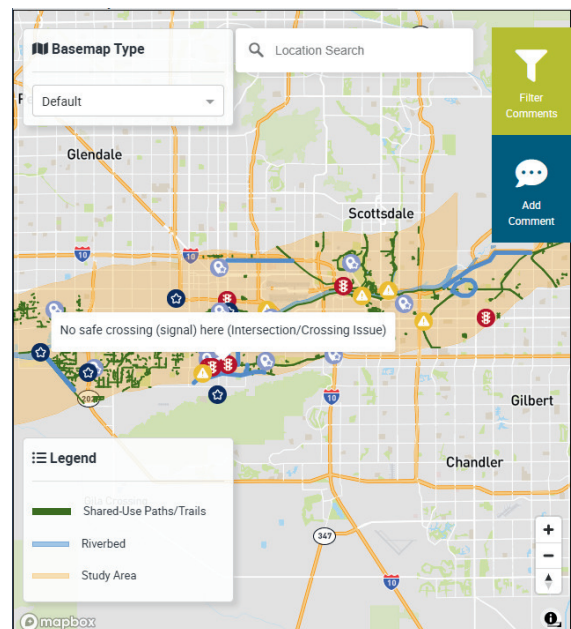


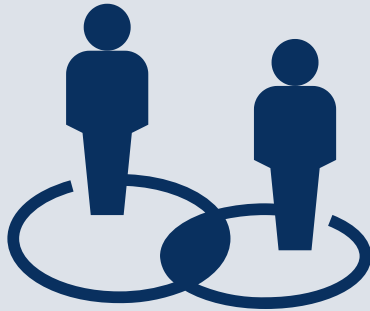
This report outlines engagement with the public from January 1 through June 30, 2025.

Types of Outreach Conducted

MAG uses a variety of engagement and outreach strategies to ensure reaching as many people as possible across the region. The news media, social media and collaboration with member agencies are used to inform communities of information and feedback opportunities.

In-person events, such as open houses, virtual engagement such as video conferencing and online and committee meeting comments are all used in combination to ensure as many voices as possible are heard throughout the region.





In-Person Events

In-person events facilitate direct dialogue between residents and MAG staff, enabling attendees to ask questions, express concerns, and share ideas in real-time. Events include presentations to affinity groups, such as realtors, and participation in meetings, including city council meetings. Additionally, open houses are held where the community is invited to interact with maps and leave comments, and information tables are staffed at public events.



Virtual Engagement

Video conferencing platforms, interactive apps, maps and surveys are used to engage the community virtually. They provide a convenient, accessible way for residents to learn about MAG projects, ask questions and share feedback. Virtual events are recorded and presentations and feedback tools are accessible to residents after the meeting to accommodate those who could not participate at the time of the meeting.



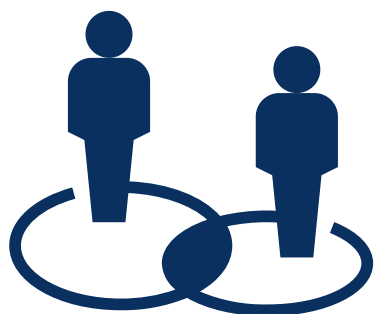
Online Public Comments

Public comments are accepted through MAG's public comment portal. Comments intended for committee meeting agenda items are accepted in writing as well as in-person during the meeting.



News and Social Media Outreach

MAG engages the public through X, Facebook, LinkedIn, and Instagram. MAG's social media platforms provide real-time information about MAG events and activities. News releases that result in news stories on television, radio, online and print media serve as an outreach tool to inform the community about feedback opportunities.



In-Person Events

Project Name	When	Type of Event	Number of People
Meridian Road Corridor Study	Feb. 4	Presentation	150
Prop 479 Implementation	Feb. 5	Presentation	20
Meridian Road Corridor Study	Feb. 11	Public open house	102
I-10 Tunnel to Split Corridor Study	Feb. 25	Presentation	15
Regional Human Services Assessment / Forging Our Future	Mar. 18	Meeting	60
Wickenburg Transportation Area Master Plan Proposed Study	May 14	Meeting	15
Wickenburg Transportation Area Master Plan Proposed Study	June 2	Meeting	6
Cave Creek Road Widening Study	June 3	Presentation	5
Rio Reimagined Active Transportation Study	June 7	Public event	100
Prop 479 Implementation	June 12	Meeting	8
Pima Road Corridor Study	June 28	Meeting	87
Total			568

Virtual Engagement



Project Name	When	Type of Event	Number of People or Responses
MAG 2025 Eight-Hour Ozone Plan Call for Public Input	Feb. 4- Mar. 7	Online comments	—
US 60 (Grand Avenue): SR 303L to SR 74 Corridor Study	Mar. 3- Apr. 1	Virtual meeting and online survey	323
Air Quality Conformity Consultation Public Input	Apr. 22- June 30	Online comments	—
Continuum of Care Data Reporting Forum	Apr. 30	Virtual public meeting	26
State Route 74 Corridor Transportation Study	May 18- June 6	Virtual meeting and comment map	60
MAG Active Transportation Plan Public Input Map	Jan. 1- June 30	Comment map	45
Meridian Road Corridor Study	Jan. 1- June 30	Comment map and survey	197
Total			651

Online Public Comments



The opportunity to submit public comments is prominently placed on the MAG website homepage. The public uses this link to make comments on upcoming policy meeting agenda items as well as general comments relating to a variety of topics.

MAG receives input through public comments at its policy and technical committee meetings. As part of its public comment process, MAG provides three input opportunities for the public to comment in person. These include a 15-minute “call to the audience” in which residents can comment on items under MAG’s jurisdiction that are not on the agenda, on informational items, or on items on the agenda for discussion but not for action.

The screenshot shows a web form titled "Public Comments". It includes several sections of text and input fields:

- Public Comments** (Section Header)
- Instructions:** "If you wish to provide a public comment for a public MAG meeting, please pick the appropriate committee from the dropdown box. (If your comment is not intended for a specific committee, do not select a committee and your comment will be forwarded to the appropriate MAG staff.)"
- Deadline Note:** "If your comment is for a committee and is for an agenda item designated for action, please indicate the agenda item number in your comment. Please note that comments **must be received prior to two hours before the posted start time of the meeting.** Comments received by the deadline will be provided to the committee in advance of the meeting for review and become part of the formal meeting minutes. If comments are received after the deadline, you will need to resubmit the comment prior to the next meeting of the committee."
- Guidelines:** "Note that you may also **provide your comments in person** as an alternative to submitting online. All public comments must adhere to the following guidelines: **Your comments must comply with MAG's Rules of Decorum for public comments to be made in an orderly and appropriate manner.** Personal attacks, profanity, threats, shouting, or intimidation of any kind are prohibited. Hyperlinks or electronic attachments will not be accepted or allowed. (Printed materials provided in person will be accepted)."
- Form Fields:**
 - What is your name?** (First and Last name input fields)
 - Email** (Email input field)
 - Address** (Street Address, City, State / Province, Postal / Zip Code, Country)
 - Phone** (Phone Number input field)
 - MAG Committees** (Dropdown menu)
 - Write Comments Below** (Text area)
 - Captcha** (I'm not a robot checkbox and captcha image)
 - Submit** (Submit button)

For those who cannot attend meetings in-person, MAG accepts public comments through the MAG website at azmag.gov/comment. Comments received up to two hours prior to the posted start time of the meeting are compiled into a public comment report that is forwarded to committee members for consideration prior to action being taken at the meeting, enabling public priorities and input to influence decision-making. In addition to being included in the minutes, these comments are automatically archived to a MAG database. All online comments received from January 1 to June 30, 2025, are included in the Appendix of this report.

News and Social Media Outreach



News Media



115

Television mentions



679

Online and print mentions



92

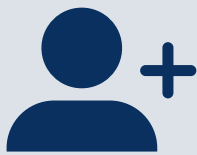
Radio mentions



886

Total media mentions

Social Media (Facebook, Instagram, LinkedIn, X)



1,428

New followers on all social media platforms



14,444

Total followers on all social media platforms

1,563,437



Social media impressions



30,444

Social media interactions



10,402

Clicks on post links



403,088

People reached

*The same person may follow multiple social media platforms therefore could be counted more than once.

Descriptions of Key Outreach Events

Meridian Road Corridor Study

February 4, 2025

MAG provided an overview of the study to 150 attendees at the Sun Land Village Community HOA meeting in Mesa, and encouraged residents to submit comments on the Meridian Road Corridor study's online comment map.

February 11, 2025

MAG conducted its first public open house for the Meridian Road Corridor study. The goal of the public open house was to provide an update on the study goals and objectives, provide an overview of the existing conditions, travel demand and the anticipated project growth along the corridor, and get public input on the future vision of Meridian Road.

The majority of residents attending the meeting did not want Meridian Road built behind their community. Currently, Meridian Road does not exist behind their community and a part of the MAG study is to build a continuous Meridian Road. They also stressed that they did not want any pass-through traffic cutting through the community on Guadalupe Road, if Guadalupe Road connects to a future Meridian Road.

The public was invited to take a survey and to leave suggestions on the study's online comment map. MAG received 121 survey responses and 76 comments via the map between January 1 and June 30, 2025, which included the comments received from the February 4 Sun Land Village Community HOA meeting.

MAG 2025 Eight-Hour Ozone Plan Call for Public Input

February 4, 2025

MAG published a public notice announcing an opportunity to comment on and/or request a public hearing on the Draft MAG 2025 Eight-Hour Ozone Plan - Submittal of Applicable Moderate Area Requirements for the Maricopa Nonattainment Area.

The MAG 2025 Eight-Hour Ozone Plan has been prepared to meet applicable Moderate Area Clean Air Act requirements for the 2015 eight-hour ozone National Ambient Air Quality Standard. The plan addresses Moderate Area requirements including reasonably available control technology, new source review, reasonable further progress, vehicle inspection and maintenance program, and contingency measures.

No comments on the draft plan or requests for a public hearing were received during the 30-day public review period which closed at 5:30 p.m. on March 7, 2025.



Prop 479 Implementation

February 5, 2025

MAG staff were invited to attend the West Valley realtors group to provide an update on Prop 479. Since the election last November, the group was interested in future projects and anticipated construction schedule. The group of realtors had questions regarding freeway projects in the Northwest Valley, SR 30, Grand Avenue between Loop 303 and I-17, and the I-17 Central Valley study.

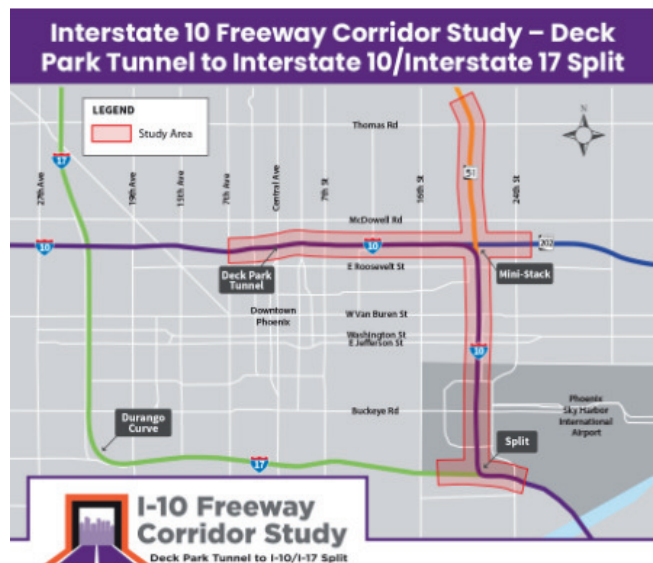
June 12, 2025

MAG presented an overview of Prop 479 implementation at the Heart of Scottsdale Tour for East Valley realtors in Scottsdale. The group of realtors had questions regarding current construction along the Loop 101 Pima, and asked many questions about the first and second phase of freeway construction projects, specifically about SR 30 and I-17 reconstruction.

I-10 Tunnel to Split Corridor Study

February 25, 2025

MAG presented to the Phoenix Community Alliance Multi-Modal Connectivity Committee. Comments were generally supportive of the I-10 Tunnel to Split Corridor Study's recommendations. Questions were raised about the impact to the 10th Street pedestrian bridge, potential right-of-way impacts, impacts to existing landscaping, and timing of implementation.

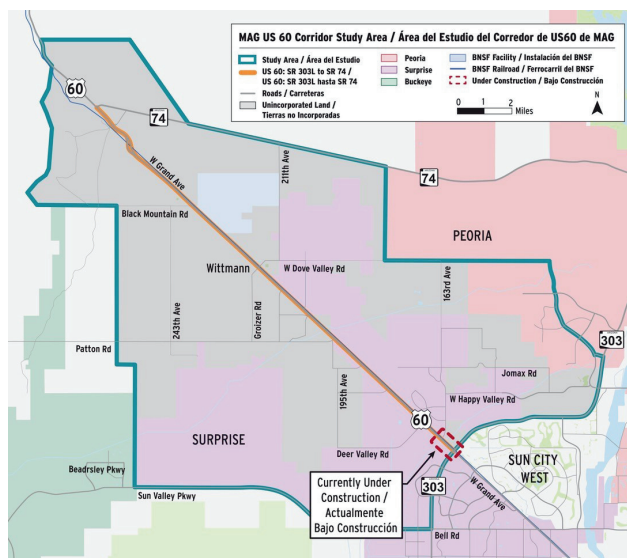


US 60 (Grand Avenue): Loop 303 to State Route 74

March 3, 2025

MAG invited the public to a virtual meeting during which a detailed presentation was provided discussing existing and future traffic conditions and different ways that traffic congestion might be addressed.

The Arizona Department of Transportation (ADOT) also provided a presentation on its Project Assessment to evaluate a potential new traffic interchange on Loop 303 between US 60 and El Mirage Road and a new round of near-term improvements coming soon for the area of 163rd Avenue, Loop 303, and Grand Avenue.



Throughout the two presentations, meeting attendees were encouraged to submit questions and comments in writing using the virtual platform's "Q&A" dialogue box, and when the presentations concluded, the team answered the questions live.

Information was also provided about the online comment form, where each alternative was illustrated and described, and where people were able to indicate whether they agreed or disagreed and provide comments about each.

After the March 3, 2025 meeting, the online comment form was further publicized by email and social media. In total, 249 comment forms were received and 616 individual comments were submitted by 127 commenters.

Regional Human Services Assessment / Forging Our Future

March 18, 2025

104 surveys and 38 interviews were conducted between August 2024 and March 2025 with human services stakeholders, community partners, and Management Committee members to assess the value stakeholders gave to MAG's human services planning role, specifically through its four committees, namely, the Human Services and Community



Initiatives Committee, the Human Services Technical Committee, the Regional Domestic Violence Council and the Maricopa Regional Continuum of Care.

Nearly 75 percent of those surveyed were satisfied or very satisfied with regional human services planning at MAG. Approximately 25 percent were neutral.

Interview respondents frequently expressed finding value in MAG's role in providing quality data and convening stakeholders in a neutral and constructive setting. More than 75 percent of survey respondents indicated a role for MAG in providing best practice information and research.

A number of people interviewed encouraged MAG to reconsider committees without a clear purpose or concrete deliverables. Connecting data to action steps was offered as a priority. There is strong support for focusing on impact over process.

Based on analysis of the data collected from human services stakeholders, community partners, and Management Committee members, the Community Initiatives Coordinating Committee was formed by the MAG Regional Council on April 23, 2025, combining and replacing the four aforementioned committees. The intended outcome of this new committee is a more nimble, holistic, and effective approach to regional human services planning.

Air Quality Conformity Consultation Public Input Process

April 22, 2025

MAG published a public notice on a proposed amendment to the FY 2025-2030 MAG Transportation Improvement Program (TIP), MOMENTUM 2050 MAG Regional Transportation Plan (RTP), and conformity analysis.

The proposed amendment to the TIP and MOMENTUM 2050 RTP includes Freeway Life Cycle Program projects, General Roadway projects, Arterial Life Cycle Program projects, and Transit projects.

The conformity analysis includes a regional emissions analysis to support a finding that the amendment to the TIP and RTP meet transportation conformity requirements for ozone and particulate matter in the nonattainment areas located in Maricopa and Pinal counties.

Consultation on the proposed amendment to the TIP and MOMENTUM 2050 RTP and the conformity analysis was made available for a 30-day public review period beginning on April 22, 2025. As of June 30, no public comments have been received.

MAG also conducted consultation on a conformity assessment for an amendment and administrative modification to the FY 2022-2025 MAG TIP and MOMENTUM 2050 RTP in February, March, April, May, and June 2025. The amendment and administrative modifications involved changes to several projects such as Freeway Life Cycle Program projects; General Roadway projects; Arterial Life Cycle Program projects; Transit projects; FY 2026, 2027, and 2028 PM-10 Paving Unpaved Road projects; FY 2025 Arterial Life Cycle Program Federal Fund Advancement projects; General Roadway Third Deferral projects; FY 2026, 2027, and 2028 Arterial Rehabilitation and Reconstruction Program projects; FY 2026, 2027, and 2028 Arterial Widening Program projects; and Section 5310 projects. MAG has received no public comments.

Continuum of Care Data Reporting forum

April 30, 2025

The Maricopa Regional Continuum of Care is in the process of updating the format of the current Homelessness Trends Report and is looking for community feedback. On April 30, 2025, MAG hosted a virtual forum to hear how the community currently uses the Homelessness Trends Report, gather feedback on potential new formats, and ensure these tools meet community needs. Informal comments were collected through a shared online whiteboard.

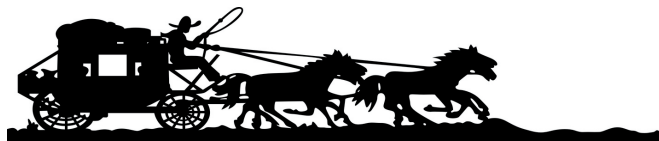
Wickenburg Transportation Area Master Plan Proposed Study

May 14, 2025

MAG attended the Wickenburg Economic Development and Transportation Advisory Committee public meeting to discuss the proposed study and partnership between MAG and the town of Wickenburg. Besides the members of the committee, there were 15 members of the public in attendance at the meeting held at Wickenburg's Town Hall. The comments from attendees were overwhelmingly very positive. They were excited to get the study started and expressed the need for the study.

June 2, 2025

MAG staff presented the proposed Wickenburg Transportation Master Plan Study and cost to the mayor and council. Six citizens were also in attendance.



Town of Wickenburg

This item was on the agenda for action – approving town funding to contribute to the overall study amount. The council and mayor asked questions regarding the study schedule and consultant selection process.

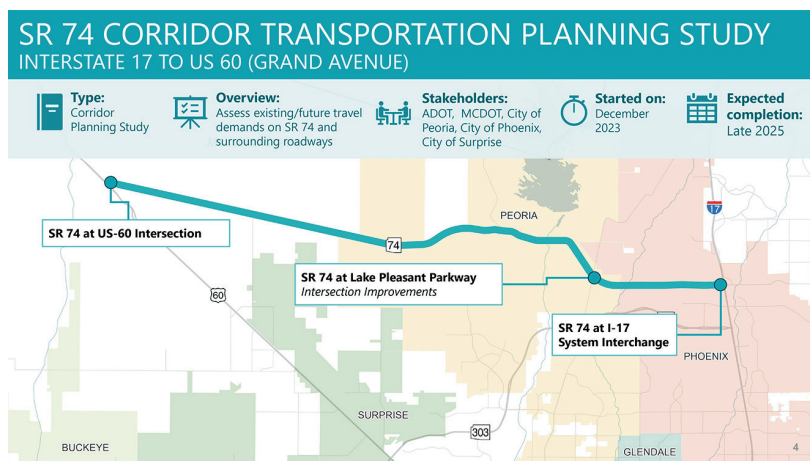
State Route 74 Corridor Transportation Study

May 18 - June 6, 2025

The SR 74 Corridor Transportation Study virtual public meeting on May 21, 2025, provided an overview of the study objectives and background, existing and future travel forecasts, accident data, and physical and environmental constraints to its 44 attendees. The goal of this meeting was to collect comments from the public on the vision of SR 74. Participants were directed to leave their comments on the study's online interactive comment map.

Sixteen comments were collected via the online interactive comment map. Public input emphasizes the critical need for improved pedestrian and bicycle infrastructure along the SR 74 corridor.

Safety concerns were raised about traffic operations at the New River Road/Lake Pleasant Parkway/SR 74 interchange, the lack of designated pullouts for emergency and recreational use, and inadequate signage at key turn-offs.



Commenters recommended a traffic study to address growing congestion and heavy truck use on local roads, particularly near schools and residential areas. A turn lane and no-passing zone were suggested to accommodate equestrian and residential traffic. Additional concerns include wildlife-vehicle collisions near Lake Pleasant and support for integrating environmental and emergency access features into multi-use path planning.

Overall, the public strongly favors infrastructure that balances safety, recreation, and long-term regional connectivity.

Cave Creek Road Widening Study

June 3, 2025

At the request of the city of Phoenix, MAG presented a Cave Creek Road Widening Study update to the Desert View Village Planning Committee and a few of its residents. The committee was interested in the study corridor and asked questions regarding the status of the vacant state land and future growth along the corridor.

The study places a significant emphasis on understanding the values and anticipated future transportation needs of the affected residential and business communities, ensuring that the proposed roadway improvements align with their long-term goals.

The Cave Creek Road Widening Study interactive comment map began receiving comments in August 2024. There was one comment in 2025.

Rio Reimagined Active Transportation Study

June 7, 2025

MAG staff hosted a booth at the Valley Metro South Central Extension Celebration in Phoenix and spoke with about 100 people regarding the Rio Reimagined Active Transportation Study. MAG engaged the public with an activity to gather feedback on the public's top priorities for amenities, activities, what they most want, and how they feel about using the Rio Reimagined active transportation corridor.

People were encouraged to visit MAGRioActive.com interactive website to complete a survey and provide feedback using the interactive map and funding scenario.



Pima Road Corridor Study

June 26, 2025

Pima Road Corridor Study Public Meeting #2 was held at the Holland Center in Scottsdale. 87 people attended. The focus of this public meeting was to present the draft alternatives for the Pima Road Corridor Study.



The graphic display boards, roll plots, and PowerPoint presentation highlighted the draft alternatives, which included widening the road from two to four lanes, new signalized intersections and turning the intersection of Pima Road/Cave Creek Road from a stop-controlled intersection into a roundabout.

Participants were invited to complete a survey, focusing on the different alternatives. As of June 30, 95 surveys were completed. The public comment period ends July 24.

MAG Active Transportation Plan Public Input Map

January 1 - June 30, 2025

The MAG Active Transportation Interactive Comment Map is an online tool used to collect public feedback on biking and walking infrastructure in the region. The public is invited to leave comments on existing active transportation infrastructure as well as feedback on safety, connectivity, maintenance, and ADA accessibility throughout the system. MAG prepares an annual report documenting feedback received in the previous calendar year to aid member agencies and the region in future active transportation planning efforts.

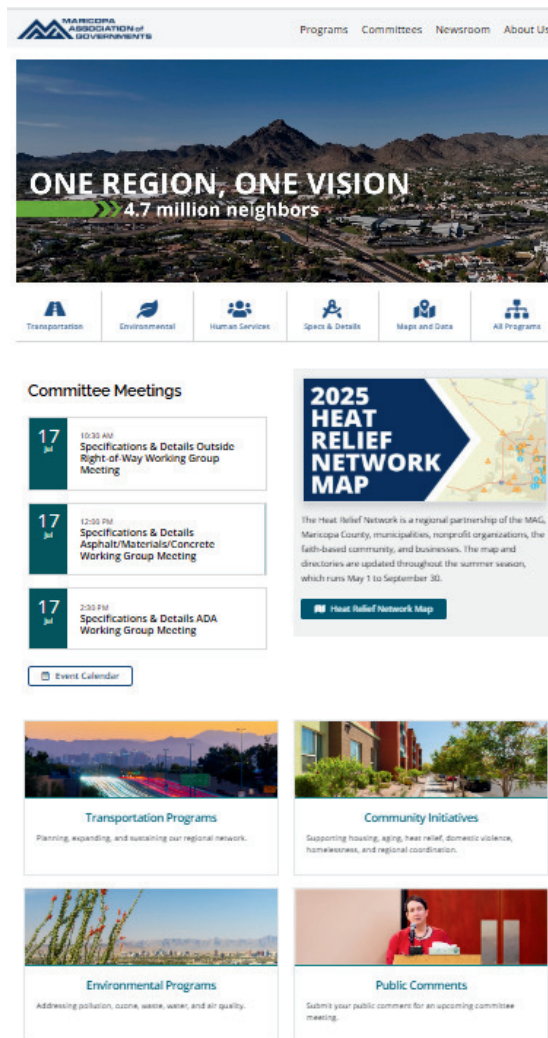
There were 45 comments received between January 1 - June 30, 2025, highlighting key barriers to safe and equitable active transportation.

Conclusion

The best way to make the region better is by hearing from the people who live here regarding what they find to be most important and using that input to inform decisions. MAG provides a variety of opportunities to provide feedback to that end.

The diverse range of outreach activities across multiple platforms has made it easier for people to share their thoughts in a variety of ways, including quantitative surveys; in-person events, meetings, and presentations; and by creating new ways to connect online. Media relations also play an important role in communicating MAG activities broadly to the public.

If you are interested in adding your voice to the MAG process, you are invited to participate through any of the means outlined in this report. All MAG meetings are open to the public and held at facilities that are accessible to people with disabilities and people who rely on public transit. MAG posts all meeting agendas and revisions to our website at least 24 hours before the meeting. A calendar of upcoming meetings is available on our website at azmag.gov.



Appendix

The following report comprises public comments received through the website portal at azmag.gov/comments.

9-1-1 Oversight Team

PUBLIC COMMENT REPORT

Comments Received From: January 01, 2025 **to** June 30, 2025

Date Received: 1/4/2025 10:36:29 AM
Name: werica lewis
City/State: Phoenix AZ
Comment: i got 5 days to pay my rent [Phone Number Removed] call me i wanna apply

Date Received: 3/31/2025 3:56:31 PM
Name: Erica Lewis
City/State: Phoenix AZ
Comment: I'm homeless



302 N. First Avenue, Suite 300 ▲ Phoenix, Arizona 85003
602-254-6300 ▲ mag@azmag.gov ▲ azmag.gov

Air Quality Technical Advisory Committee

PUBLIC COMMENT REPORT

Comments Received From: January 01, 2025 **to** June 30, 2025

Date Received:	5/14/2025 8:15:48 PM
Name:	Joe Hayduk
City/State:	Gold Canyon AZ
Comment:	Please contact Lee Zeldin. Get rid of CBG all year the cost of too high . And zero proof does anything for the air



302 N. First Avenue, Suite 300 ▲ Phoenix, Arizona 85003
602-254-6300 ▲ mag@azmag.gov ▲ azmag.gov

Building Codes Committee

PUBLIC COMMENT REPORT

Comments Received From: January 01, 2025 **to** June 30, 2025

Date Received: 4/17/2025 5:28:35 AM

Name: WT Mahoney

City/State: Gilbert AZ

Comment: Hello, I am a resident in Gilbert Az and am very concerned that the failed sewer pipes that we are now having to replace after only 20 years will dramatically impact the other communities (Chandler, Mesa, Tempe) along the 202.
I have sent the following to the council and have been informed that nothing can be done to go after the manufacture for the defective product that was expected to last 40-50 years. "Can someone please explain why the city is not going after the installer of the failed pipes? Failed pipes after only 20-25 years in the ground. I can't imagine this is happening and the city is not taking care of the ratepayers. Seems to me that many appear to be asleep at the wheel!

I watched your council meeting last night and am really confused that you choose to ignore what the speakers requested. What the survey you did indicated...

I'm astounded that you are the regulators of these monopoly utilities and this is how you choose to serve the people in the community.

Please let me know who In MAG can address my concern.

Thanks
Bill Mahoney



302 N. First Avenue, Suite 300 ▲ Phoenix, Arizona 85003
602-254-6300 ▲ mag@azmag.gov ▲ azmag.gov

Community Initiatives Coordinating Committee

PUBLIC COMMENT REPORT

Comments Received From: January 01, 2025 to June 30, 2025

Date Received: 6/21/2025 5:21:13 AM

Name: Robert Ripley

City/State: tempe az

Comment: 12160.5UNITS HOURS
MINUTES HOURS60.5CALC KEYS A1 A3 A4 C35
160.560.5
1221445.125
1
0.[Phone Number Removed]1983473660.25
60.5UNITS INTO
TIME HOURS CONVERSION
SPEED DISTANCE
60.50.[Phone Number Removed]19834760.5
60.53660.25
60.560.5
60.53660.25
221445.125

221445.125
60.560.560.5

0.[Phone Number Removed]198347

0.[Phone Number Removed]09917367320.5CALCULATE
26794860.125442890.25442890.100000051
1221445.125
60.5221445.125TIME MONEY CONVERSION ONE

60.53660.254.[Phone Number Removed]0281E-06
60.560.53660.25PRODUCTION

60.560.50.[Phone Number Removed]15757
810544793.3TIME MONEY CONVERSION TWO
810544793.3810544793.34.[Phone Number Removed]0281E-06
3660.[Phone Number Removed]2WORKING NO PRODUCTS
TIME MONEYFOODS
1.11E+05CONVERSION TWO0.[Phone Number Removed]434961ONE
UPPING WORKING DISTRIBUTIONS30.25TWO
STEP UP WORKING0.[Phone Number Removed]8961567LIFT COSTS PRICE
THREE
ENTER A1 VALUEPREVIOUSLYPRODUCTION FULL DEPOSIT ESCROW OF
VOUCHER
ENTER 1 AT C35
ENTER K30 AT C35

PLACE 4 AUTOMATION AND MONEY FACTORS HERE OF YOUR WRITING
COGNATE SINGULARITY HEREKNOW EXAM
TIME BANKCOLLABORATIONS QUANTIFICATION HERE
AUTOMATION DEPOSITS ACCOUNTSLEARNING POSSIBILITY HERE
BANKERS DRAW
1.11E+05
PRODUCTION PRODUCTMATHEMATICAL TIME BANK IDENTICAL
IDENTIFICATIONS
3660.25PERIODICAL CAPITOL ADDITIONSLIFETIME PAID TIME T -UNITS
CAPITOL ADDITIONS BUY AUTOMATION STANDARD BUY PRODUCTS
WORKING NO PRODUCTCAPITAL ADDITION S1.21E+02HOUR UPPERS
1.21E+02SELECTION OPTION MATHMATICAL WORKING MONEY 8-1/2 -11
ACTIVE STAMP TIME STAMPS PRODUCTIONS MANUFACTUREING
30.25BUY MONEY ONCEAVERAGE +.5 1.21E+02UNIT-COST-UNIT<DEPOSIT
INFINITY IDENTIFACALIO IN T- BANK CAPITOL ADDITIONS BUY MONEY
AUTOMATION
MEMBERSDISTRIBUTION STATIONSLIFETIME HOURS BANK DEPOSITS
60.53.72E+03PAID COSTNO YES AMOUNTPRODUCTS APPLY MEMBERS
ONLY
3660.[Phone Number Removed]2NEGATIVE TIME MACHINE2.93E+04
3.19E+12PAID COSTS LIMIT1.21E+02TOTAL UNIT STEP UP
FACTORIES FARMS TRAVELERS MOBILITYPOSITIVE TIME MACHINE4.39E+04
7.18E+121.21E+02LIFETIME HOURS DEPOSITS ACCOUNTS
[Phone Number Removed]5319.3PRESIDENTIAL PROPOSITION5.86E+04

1.28E+131 TOO 10 YEARYARS WORKINGFRONT CREDIT 2.64E+10PAID
DEPOSITS UPPERS
POTIETIAL PARTICULAR?7.32E+041.99E+13HEAT PERIODICAL 8.86E+06
2.27E+08
8.78E+042.87E+13TWO TIME STAMP AUTOMATION DIFFEENCES PAID
SOCIETY2.41E+08
1.02E+053.91E+131.06E+072.55E+08
WHAT YOUR VIEWING IS O1.17E+055.10E+132.55E+08
TIME IDENTIFICATION STANP KNOW?!1.32E+056.46E+13PROPRIETOR
COMPANIES FOODS SHOPS1.24E+072.69E+08
SEND WORKER1.46E+057.98E+13PRODUCTION COMPNIES1.42E+07
2.83E+08
SEND EMPLOYMENT1.61E+059.65E+13PRODUCTION MANUFACURING
1.59E+07
TIME STAMP 1.76E+051.15E+14PRODUCT QUANTIFICATION1.77E+07
1211.90E+051.35E+141.95E+07
1212.05E+051.56E+14MANUFATER TIME STAMP INITIAL S SAMPLES
2.13E+07
AVERAGE +.52.20E+051.79E+14PROPRIEYR PROXIE18 =192.30E+07
EQUATION LIFTS LEVELS2.34E+052.04E+140.52.48E+07
2.49E+052.30E+143.01E+07
2.64E+052.58E+143.19E+07
2.78E+052.88E+143.37E+07
2.93E+053.19E+142.13E+08
SIGN RECIET OF INFORMATION COPIER COMPIES CASH
HEREROBERT RIPLEY
WORKING POWERNOWINOVATIONS RENOVATIONS OPTIONS
AVAILIBILITYS APPLY
EMPERICALISM ON O SPEAD SHEETCAPITOL ADDITIONS BUY PRODUCT
AUTOMATION T-UNIT EXCHANGE
FRONT CREDITS
COPIER COMPENSATION CASH SUPPLY IN BANKS TIME BANKCAPITOL
ADDITIONS BUY MONEY

KNOW EXAM



302 N. First Avenue, Suite 300 ▲ Phoenix, Arizona 85003
602-254-6300 ▲ mag@azmag.gov ▲ azmag.gov

Elderly and Persons with Disabilities Transportation Committee

PUBLIC COMMENT REPORT

Comments Received From: January 01, 2025 **to** June 30, 2025

Date Received: 4/8/2025 12:39:48 AM
Name: Mark-Jayson Alegre
City/State: Phoenix AZ
Comment: Yes we we've been trying to get Altcs benefits and going it has t been stolen from us



302 N. First Avenue, Suite 300 ▲ Phoenix, Arizona 85003
602-254-6300 ▲ mag@azmag.gov ▲ azmag.gov

Regional Council Executive Committee

PUBLIC COMMENT REPORT

Comments Received From: January 01, 2025 **to** June 30, 2025

Date Received: 4/22/2025 9:46:07 AM

Name: Patrick Briody

City/State: Glendale AZ

Comment: Two Ideas for Your Consideration by connecting Westgate w/light rail for:
1. potential Summer Olympic bid?
2. Last two cars restaurants bid & rotate for lovely happy hour & dinner across Maricopa county by rail. Possibly weekend brunch, too. Revenue raised from MAG rail night dinners & brunch may go toward rail safety & security. Light rail must have security at all stops and MAG rail riding security: ASU Tempe, Downtown PHX & Gdale Westgate.



302 N. First Avenue, Suite 300 ▲ Phoenix, Arizona 85003
602-254-6300 ▲ mag@azmag.gov ▲ azmag.gov

Standard Specifications & Details Committee

PUBLIC COMMENT REPORT

Comments Received From: January 01, 2025 **to** June 30, 2025

Date Received: 3/5/2025 9:59:00 AM

Name: christian hass

Comment: Like to introduce our branded mix, PHCLSM-FSFF and discuss under MAG 728 and MAG 604.

Date Received: 3/5/2025 3:13:00 PM

Name: scott hensley

City/State:

Comment: This pertains to the CMP backfill details. as someone with 45 years of experience with Contech CMP and specifically with underground detention systems, gap graded materials can, stress can, present and opportunity to create bouyancy forces when the void space is flooded. Be care with gap graded materials. We used to use pea gravel and AZ and I have seen 96" CMP pop out of the ground. Use of the filter fabric between gap graded materials and finer insitu soils is a good idea for the same reason. Over time the insitu soils will migrate into the gaps and create settlement. You notes on compaction under the haunches is spot on, but contractors won't do it unless an inspector is watching. They don't know how to do that. They think the fill will magically "self compact" which is why they used to use pea gravel. Don't leave anything to the EOR. They will push the question to the supplier and won't take responsibility. Not sure what you are thinking on corrosion. If you referring to polymer coating, the pipe is fine until you cut and weld which is required to make the bulkheads, fittings etc. That destroys the coating and all they do is slather on some black goop. This is even worse with aluminized steel. Last thing, but I would love to help with this committee, I have seen alot of contractors who don't locate the pipes

draining into the pipe UDS so they install the CMP and when they lay the SS pipe, they will cut a hole or holes into the CMP, insert the SS pipe and then parge around it with concrete. This is a terrible method but saw it dozens of times in Phoenix.



302 N. First Avenue, Suite 300 ▲ Phoenix, Arizona 85003
602-254-6300 ▲ mag@azmag.gov ▲ azmag.gov

Transportation Policy Committee

PUBLIC COMMENT REPORT

Comments Received From: January 01, 2025 **to** June 30, 2025

Date Received: 2/14/2025 8:55:00 PM

Name: Brock Meyer

City/State:

Comment: For the meeting scheduled on February 19, 2025,

I am a homeowner in the Asante community located in NW Surprise near the intersection of Loop 303 and US 60.

The reason that I am writing is to make the committee aware of large gaps that exist in two sections of the Asante community wall that runs parallel to US 60 that is in place to separate the homeowners in the community from the noise and traffic on this busy stretch of highway.

Having these gaps that are hundreds of feet wide in the community wall that lead directly to the BNSF rail line and heavy traffic on US 60 expose the homeowners that live in Asante to potential safety issues such as an increased risk of crime by allowing individuals from outside of the community to have multiple points of egress and ingress to US 60, and safety concerns such as if during a traffic collision a vehicle on US 60 was to lose control and enter the community through one of these gaps in the community wall and cause property damage, or if an individual or pet in the community inadvertently crosses these gaps in the community wall and enters the BNSF rail or traffic on US 60.

In addition, these gaps in the community wall are exposing the homeowners in the Asante community to increased pollution and road noise from the many trains that pass by the community each day on the BNSF rail line and from the heavy traffic on US 60.

I have shared these concerns that homeowners such as myself in the Asante community have which are present by having these gaps in the community wall with the Councilmember in the City of Surprise that represents this district. The response was that the wall has these gaps to allow drainage in the event of a heavy flood to lead to the channels that run along US 60. However, there are alternative ways to allow flood water to flow out of the community and still complete these gaps in the community wall, such as by having a drainage system that would run under the wall and lead the flood water directly to the channels.

I am bringing this issue to the attention of the Transportation Policy Committee as this community wall is directly adjacent to a busy US highway within the MAG area.

Thank you

Date Received: 2/16/2025 9:33:00 AM
Name: Holly Rubino
City/State:
Comment: I live in Asante and walk the path that runs parallel to the train tracks on Grand. There is an open area where the wall needs to be completed there. Can someone address this at the Feb 19th meeting? Thank you!

Date Received: 3/13/2025 4:33:49 PM
Name: Brock Meyer
City/State:
Comment: For the March 19th Transportation Policy Committee meeting,

As a homeowner in the Asante community in Surprise which runs along US 60 and a major BNSF railway track, I am writing in concerning the \$3.2B, 4,320-acre intermodal rail facility that BNSF has proposed several miles northwest of our community.

As this project will be voted on later this year by the Maricopa County Board of Supervisors to determine if it will be allowed to proceed, I would like to ask that any approval of this project include a requirement for BNSF to build complete noise barrier walls along communities that the railway track runs parallel to along US 60, such as the Asante community.

BNSF on their project website touting the economic benefits that they expect this new facility to bring to the region admits that this will lead to additional freight trains that will travel along this railway track.

As there is already excessive noise during the day and night in the Asante community from the current number of BNSF trains that travel along the rail near US 60 due to noise walls not currently being in place along this railway track, I am bringing this to the attention of the Transportation Policy Committee to request that the Maricopa County Board of Supervisors look out for the needs of their constituents and have BNSF be responsible to build noise walls as part of any potential approval of this proposed project to mitigate the noise and environmental concerns for homeowners and residents who live near this BNSF railway track.

Thank you

Date Received: 5/19/2025 1:47:05 PM

Name: Kevin Hoy

City/State: Mesa AZ

Comment: I will be presenting in the May 21, 2025 TPC meeting, to ensure 2 projects continue to move forward regarding the construction of a sound wall that would be installed on the south side of the US60, stretching East of Crismon Road to Meridian Road. Please refer to this video regarding this request, [Hyperlink Removed]

MAG-20-RTP-044B US 60 (Superstition): Ellsworth Rd to Meridian Rd (GPL)
Freeway: GPL (widen)

MAG-20-RTP-045B US 60 (Superstition): Ellsworth Rd to Meridian Rd (HOV)
Freeway: HOV (new lane)



302 N. First Avenue, Suite 300 ▲ Phoenix, Arizona 85003
602-254-6300 ▲ mag@azmag.gov ▲ azmag.gov

Transportation Safety Committee

PUBLIC COMMENT REPORT

Comments Received From: January 01, 2025 **to** June 30, 2025

Date Received: 1/8/2025 1:52:55 PM

Name: Harris Thayer

City/State: Phoenix Arizona

Comment: Are there any laws regulating electric scooters, bikes or skateboards on multi use paths such as canals, Dreamy Draw, etc.? If so, how do they get enforced?



302 N. First Avenue, Suite 300 ▲ Phoenix, Arizona 85003
602-254-6300 ▲ mag@azmag.gov ▲ azmag.gov

Website

PUBLIC COMMENT REPORT

Comments Received From: January 01, 2025 **to** June 30, 2025

Date Received: 1/4/2025 10:36:29 AM
Name: werica lewis
City/State: Phoenix AZ
Comment: i got 5 days to pay my rent [Phone Number Removed] call me i wanna apply

Date Received: 1/8/2025 1:52:55 PM
Name: Harris Thayer
City/State: Phoenix Arizona
Comment: Are there any laws regulating electric scooters, bikes or skateboards on multi use paths such as canals, Dreamy Draw, etc.? If so, how do they get enforced?

Date Received: 2/14/2025 8:55:00 PM
Name: Brock Meyer
City/State:
Comment: For the meeting scheduled on February 19, 2025,

I am a homeowner in the Asante community located in NW Surprise near the intersection of Loop 303 and US 60.

The reason that I am writing is to make the committee aware of large gaps that exist in two sections of the Asante community wall that runs parallel to US 60 that is in place to separate the homeowners in the community from the noise and traffic on this busy stretch of highway.

Having these gaps that are hundreds of feet wide in the community wall that lead directly to the BNSF rail line and heavy traffic on US 60 expose the homeowners that live in Asante to potential safety issues such as an increased risk of crime by allowing individuals from outside of the community to have multiple points of egress and ingress to US 60, and safety concerns such as if during a traffic collision a vehicle on US 60 was to lose control and enter the community through one of these gaps in the community wall and cause property damage, or if an individual or pet in the community inadvertently crosses these gaps in the community wall and enters the BNSF rail or traffic on US 60.

In addition, these gaps in the community wall are exposing the homeowners in the Asante community to increased pollution and road noise from the many trains that pass by the community each day on the BNSF rail line and from the heavy traffic on US 60.

I have shared these concerns that homeowners such as myself in the Asante community have which are present by having these gaps in the community wall with the Councilmember in the City of Surprise that represents this district. The response was that the wall has these gaps to allow drainage in the event of a heavy flood to lead to the channels that run along US 60. However, there are alternative ways to allow flood water to flow out of the community and still complete these gaps in the community wall, such as by having a drainage system that would run under the wall and lead the flood water directly to the channels.

I am bringing this issue to the attention of the Transportation Policy Committee as this community wall is directly adjacent to a busy US highway within the MAG area.

Thank you

Date Received: 2/16/2025 9:33:00 AM

Name: Holly Rubino

City/State:

Comment: I live in Asante and walk the path that runs parallel to the train tracks on Grand. There is an open area where the wall needs to be completed there. Can someone address this at the Feb 19th meeting? Thank you!

Date Received: 3/5/2025 9:59:00 AM

Name: christian hass

Comment: Like to introduce our branded mix, PHCLSM-FSFF and discuss under MAG 728 and MAG 604.

Date Received: 3/5/2025 3:13:00 PM

Name: scott hensley

City/State:

Comment: This pertains to the CMP backfill details. as someone with 45 years of experience with Contech CMP and specifically with underground detention systems, gap graded materials can, stress can, present and opportunity to create bouyancy forces when the void space is flooded. Be care with gap graded materials. We used to use pea gravel and AZ and I have seen 96" CMP pop out of the ground. Use of the filter fabric between gap graded materials and finer insitu soils is a good idea for the same reason. Over time the insitu soils will migrate into the gaps and create settlement. You notes on compaction under the haunches is spot on, but contractors won't do it unless an inspector is watching. They don't know how to do that. They think the fill will magically "self compact" which is why they used to use pea gravel. Don't leave anything to the EOR. They will push the question to the supplier and won't take responsibility. Not sure what you are thinking on corrosion. If you referring to polymer coating, the pipe is fine until you cut and weld which is required to make the bulkheads, fittings etc. That destroys the coating and all they do is slather on some black goop. This is even worse with aluminized steel. Last thing, but I would love to help with this committee, I have seen alot of contractors who don't locate the pipes draining into the pipe UDS so they install the CMP and when they lay the SS pipe, they will cut a hole or holes into the CMP, insert the SS pipe and then parge around it with concrete. This is a terrible method but saw it dozens of times in Phoenix.

Date Received: 3/13/2025 4:33:49 PM

Name: Brock Meyer

City/State:

Comment:

For the March 19th Transportation Policy Committee meeting,

As a homeowner in the Asante community in Surprise which runs along US 60 and a major BNSF railway track, I am writing in concerning the \$3.2B, 4,320-acre intermodal rail facility that BNSF has proposed several miles northwest of our community.

As this project will be voted on later this year by the Maricopa County Board of Supervisors to determine if it will be allowed to proceed, I would like to ask that any approval of this project include a requirement for BNSF to build complete noise barrier walls along communities that the railway track runs parallel to along US 60, such as the Asante community.

BNSF on their project website touting the economic benefits that they expect this new facility to bring to the region admits that this will lead to additional freight trains that will travel along this railway track.

As there is already excessive noise during the day and night in the Asante community from the current number of BNSF trains that travel along the rail near US 60 due to noise walls not currently being in place along this railway track, I am bringing this to the attention of the Transportation Policy Committee to request that the Maricopa County Board of Supervisors look out for the needs of their constituents and have BNSF be responsible to build noise walls as part of any potential approval of this proposed project to mitigate the noise and environmental concerns for homeowners and residents who live near this BNSF railway track.

Thank you

Date Received: 3/20/2025 2:28:33 PM

Name: Elaine Bussone

City/State: Mesa Az

Comment: I'm in favor of the Meridian Road going south for about 1000 ft and then joining up with the next street headed east. Neither Crismon or Ellsworth go entirely straight so Meridian shouldn't have to either.

Date Received: 3/31/2025 3:56:31 PM

Name: Erica Lewis
City/State: Phoenix AZ
Comment: I'm homeless

Date Received: 4/8/2025 12:39:48 AM
Name: Mark-Jayson Alegre
City/State: Phoenix AZ
Comment: Yes we we've been trying to get Altcs benefits and going it has t been stolen from us

Date Received: 4/17/2025 5:28:35 AM
Name: WT Mahoney
City/State: Gilbert AZ
Comment: Hello, I am a resident in Gilbert Az and am very concerned that the failed sewer pipes that we are now having to replace after only 20 years will dramatically impact the other communities (Chandler, Mesa, Tempe) along the 202.
I have sent the following to the council and have been informed that nothing can be done to go after the manufacture for the defective product that was expected to last 40-50 years. "Can someone please explain why the city is not going after the installer of the failed pipes? Failed pipes after only 20-25 years in the ground. I can't imagine this is happening and the city is not taking care of the ratepayers. Seems to me that many appear to be asleep at the wheel!

I watched your council meeting last night and am really confused that you choose to ignore what the speakers requested. What the survey you did indicated...

I'm astounded that you are the regulators of these monopoly utilities and this is how you choose to serve the people in the community.

Please let me know who In MAG can address my concern.

Thanks

Bill Mahoney

Date Received: 4/22/2025 9:46:07 AM
Name: Patrick Briody
City/State: Glendale AZ
Comment: Two Ideas for Your Consideration by connecting Westgate w/light rail for:
1. potential Summer Olympic bid?
2. Last two cars restaurants bid & rotate for lovely happy hour & dinner across Maricopa county by rail. Possibly weekend brunch, too. Revenue raised from MAG rail night dinners & brunch may go toward rail safety & security. Light rail must have security at all stops and MAG rail riding security: ASU Tempe, Downtown PHX & Gdale Westgate.

Date Received: 4/22/2025 10:10:20 AM
Name: Nicholas Leftwich
City/State:
Comment: I am here representing Apache Junction, but am having technical difficulties accessing the meeting.

Date Received: 5/14/2025 8:15:48 PM
Name: Joe Hayduk
City/State: Gold Canyon AZ
Comment: Please contact Lee Zeldin. Get rid of CBG all year the cost of too high . And zero proof does anything for the air

Date Received: 5/19/2025 1:47:05 PM
Name: Kevin Hoy
City/State: Mesa AZ
Comment: I will be presenting in the May 21, 2025 TPC meeting, to ensure 2 projects continue to move forward regarding the construction of a sound wall that would be installed on the south side of the US60, stretching East of Crismon Road to Meridian Road. Please refer to this video regarding this request, [Hyperlink Removed]

MAG-20-RTP-044B US 60 (Superstition): Ellsworth Rd to Meridian Rd (GPL)
Freeway: GPL (widen)

MAG-20-RTP-045B US 60 (Superstition): Ellsworth Rd to Meridian Rd (HOV)
Freeway: HOV (new lane)

Date Received: 6/21/2025 5:21:13 AM
Name: Robert Ripley
City/State: tempe az
Comment: 12160.5UNITS HOURS
MINUTES HOURS60.5CALC KEYS A1 A3 A4 C35
160.560.5
1221445.125
1
0.[Phone Number Removed]1983473660.25
60.5UNITS INTO
TIME HOURS CONVERSION
SPEED DISTANCE
60.50.[Phone Number Removed]19834760.5
60.53660.25
60.560.5
60.53660.25
221445.125

221445.125
60.560.560.5

0.[Phone Number Removed]198347

0.[Phone Number Removed]09917367320.5CALCULATE
26794860.125442890.25442890.100000051
1221445.125
60.5221445.125TIME MONEY CONVERSION ONE
60.53660.254.[Phone Number Removed]0281E-06
60.560.53660.25PRODUCTION

60.560.50.[Phone Number Removed]15757
 810544793.3TIME MONEY CONVERSION TWO
 810544793.3810544793.34.[Phone Number Removed]0281E-06
 3660.[Phone Number Removed]2WORKING NO PRODUCTS
 TIME MONEYFOODS
 1.11E+05CONVERSION TWO0.[Phone Number Removed]434961ONE
 UPPING WORKING DISTRIBUTIONS30.25TWO
 STEP UP WORKING0.[Phone Number Removed]8961567LIFT COSTS PRICE
 THREE
 ENTER A1 VALUEPREVIOUSLYPRODUCTION FULL DEPOSIT ESCROW OF
 VOUCHER
 ENTER 1 AT C35
 ENTER K30 AT C35

PLACE 4 AUTOMATION AND MONEY FACTORS HERE OF YOUR WRITING
 COGNATE SINGULARITY HEREKNOW EXAM
 TIME BANKCOLLABORATIONS QUANTIFICATION HERE
 AUTOMATION DEPOSITS ACCOUNTSLEARNING POSSIBILITY HERE
 BANKERS DRAW
 1.11E+05
 PRODUCTION PRODUCTMATHEMATICAL TIME BANK IDENTICAL
 IDENTIFICATIONS
 3660.25PERIODICAL CAPITOL ADDITIONSLIFETIME PAID TIME T -UNITS
 CAPITOL ADDITIONS BUY AUTOMATION STANDARD BUY PRODUCTS
 WORKING NO PRODUCTCAPITAL ADDITION S1.21E+02HOUR UPPERS
 1.21E+02SELECTION OPTION MARTHMATICAL WORKING MONEY 8-1/2 -11
 ACTIVE STAMP TIME STAMPS PRODUCTIONS MANUFACTUREING
 30.25BUY MONEY ONCEAVERAGE +.5 1.21E+02UNIT-COST-UNIT<DEPOSIT
 INFITY IDENTIFACALIO IN T- BANK CAPITOL ADDITIONS BUY MONEY
 AUTOMATION
 MEMBERSDISTRIBUTION STATIONSLIFETIME HOURS BANK DEPOSITS
 60.53.72E+03PAID COSTNO YES AMOUNTPRODUCTS APPLY MEMBERS
 ONLY
 3660.[Phone Number Removed]2NEGATIVE TIME MACHINE2.93E+04
 3.19E+12PAID COSTS LIMIT1.21E+02TOTAL UNIT STEP UP
 FACTORIES FARMS TRAVELERS MOBILITYPOSITIVE TIME MACHINE4.39E+04
 7.18E+121.21E+02LIFETIME HOURS DEPOSITS ACCOUNTS
 [Phone Number Removed]5319.3PRESIDENTIAL PROPOSITION5.86E+04
 1.28E+131 TOO 10 YEARYARS WORKINGFRONT CREDIT 2.64E+10PAID
 DEPOSITS UPPERS
 POTIETIAL PARTICULAR?7.32E+041.99E+13HEAT PERIODICAL 8.86E+06

2.27E+08
8.78E+042.87E+13TWO TIME STAMP AUTOMATION DIFFEENCES PAID
SOCIETY2.41E+08
1.02E+053.91E+131.06E+072.55E+08
WHAT YOUR VIEWING IS O1.17E+055.10E+132.55E+08
TIME IDENTIFICATION STANP KNOW?!1.32E+056.46E+13PROPRIETOR
COMPANIES FOODS SHOPS1.24E+072.69E+08
SEND WORKER1.46E+057.98E+13PRODUCTION COMPNIES1.42E+07
2.83E+08
SEND EMPLOYMENT1.61E+059.65E+13PRODUCTION MANUFACURING
1.59E+07
TIME STAMP 1.76E+051.15E+14PRODUCT QUANTIFICATION1.77E+07
1211.90E+051.35E+141.95E+07
1212.05E+051.56E+14MANUFATER TIME STAMP INITIAL S SAMPLES
2.13E+07
AVERAGE +.52.20E+051.79E+14PROPRIEYR PROXIE18 =192.30E+07
EQUATION LIFTS LEVELS2.34E+052.04E+140.52.48E+07
2.49E+052.30E+143.01E+07
2.64E+052.58E+143.19E+07
2.78E+052.88E+143.37E+07
2.93E+053.19E+142.13E+08
SIGN RECIET OF INFORMATION COPIER COMPIES CASH
HEREROBERT RIPLEY
WORKING POWERNOWINOVATIONS RENOVATIONS OPTIONS
AVAILIBILITYS APPLY
EMPERICALISM ON O SPEAD SHEETCAPITOL ADDITIONS BUY PRODUCT
AUTOMATION T-UNIT EXCHANGE
FRONT CREDITS
COPIER COMPENSATION CASH SUPPLY IN BANKS TIME BANKCAPITOL
ADDITIONS BUY MONEY

KNOW EXAM

Report Parameters

Date Generated: 7/1/2025 3:38:44 PM
Committee: All
Meeting Date: 6/30/2025 01:00 PM
Excluded Before: 1/1/2025 11:00 AM