

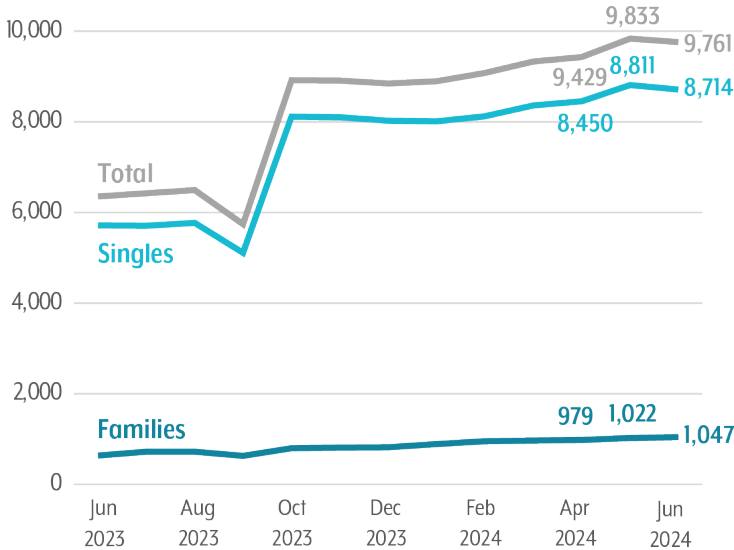
# Homelessness Trends Report: April-June 2024

Maricopa Regional Continuum of Care

This quarterly report is meant to highlight trends in the population experiencing homelessness as well as system performance measures in Maricopa County. All data comes from the Maricopa Homeless Management Information System (HMIS) unless otherwise noted.

**Important Note:** A change in the outreach activity policy from 30 to 90 days last quarter caused an expected significant increase in Actively Homeless numbers and a decrease in Outflow. This change can be viewed starting October 2023. Please see [this document](#) for further information.

## Total Number of Actively Homeless Households



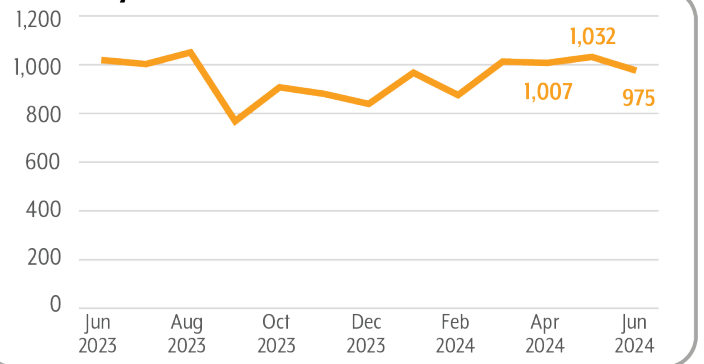
**Actively Homeless households** are households that recently engaged with homeless service providers in Maricopa County.

Please note that the major increase in October 2023 is due to a change in outreach policy from 30 days to 90 days, resulting in significantly more households and clients that meet the actively homeless definition in our system. However, we see that after the spike in October, there was a leveling off.

**In June 2024, there was a total of 13,124 actively homeless clients in 9,761 households.** The number of clients on the singles side was 9,155 and on the families side, there were 3,969 persons in families. This quarter, there was an increase in the number of actively homeless households from April to May, then a slight drop for total households and single households. Family households saw a steady increase over the quarter.

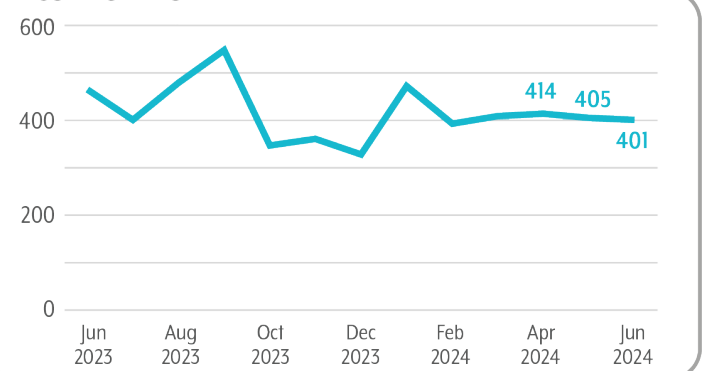
**New to System** is defined as households that are experiencing homelessness for the first time. This quarter, there was a slight increase in new households from April to May, and then a drop in June. Other aspects of inflow to the homeless system include clients returning from housing and returns from inactive. Returns from housing and returns from inactive saw the same trend this quarter. Overall, inflow remains slightly lower year over year but is not definitively trending down.

## New to System



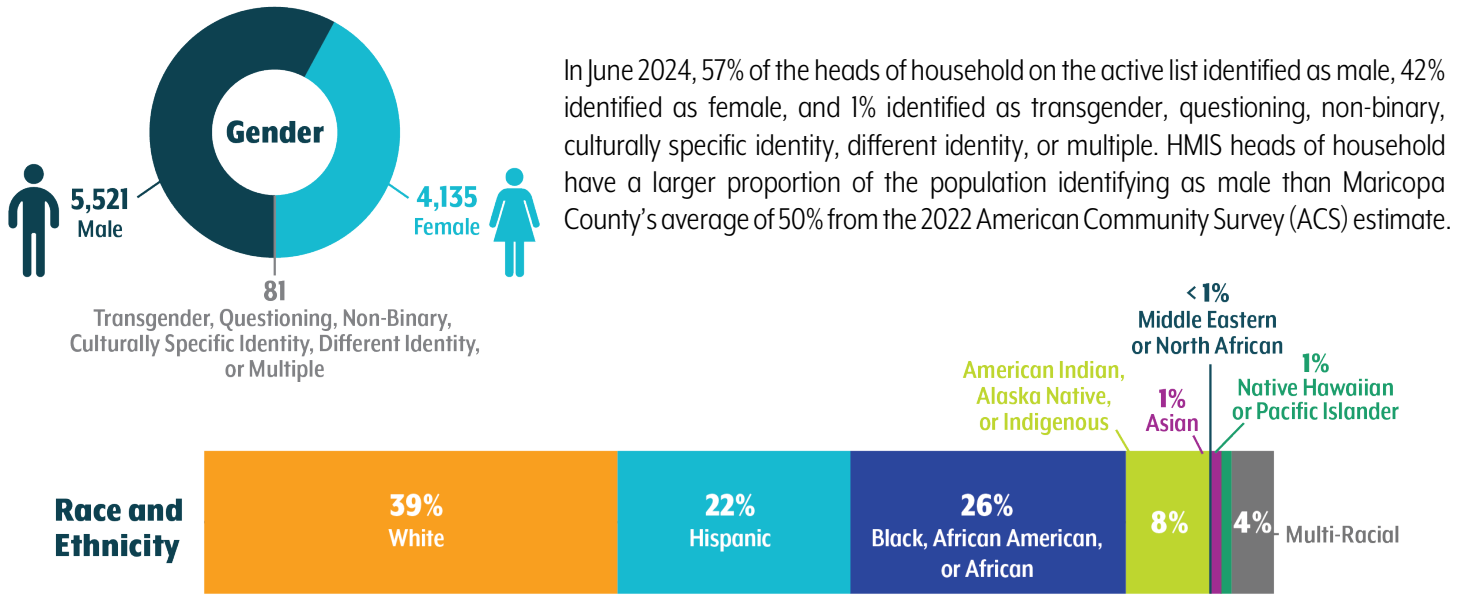
**Positive Exits** are defined as households that leave the system and move into permanent housing on their own. This quarter, positive exits remained fairly steady with a slight decrease. Another component of outflow from the homeless system is housing placements, households that move into permanent housing programs. Housing placements went from 127 in April to 136 in May and 105 in June. Overall, outflow is fairly steady without significant change.

## Positive Exits



# Demographics Snapshot, June 2024

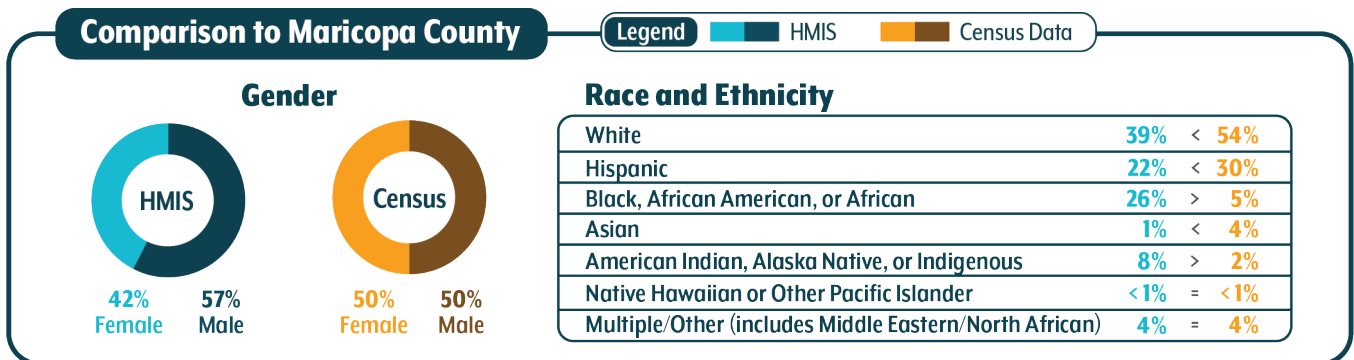
The following section shows a snapshot of demographics for **heads of households** from the most recent month's active list compared to Census data for Maricopa County. The active list is a list of all households experiencing homelessness in Maricopa County as documented in HMIS. This analysis excludes blank and unknown responses.



The Continuum of Care Board has prioritized race and equity, and one aspect of this effort is to consistently review data for the regional homeless system as it pertains to race and ethnicity. HMIS data shows a significantly larger proportion of the population identifying as Black or African American as well as American Indian or Alaska Native compared to the overall Maricopa County population from the 2022 ACS estimate (see detailed comparisons below).



The largest age group from the June 2024 active list is adults ages 25-61, which accounted for 78% of the active population experiencing homelessness' head of households. Children (age 0-17) only make up less than 1% of head of households, while youth (age 18-24) make up 9% and older adults (age 62+) make up 13% of the active list's head of households.

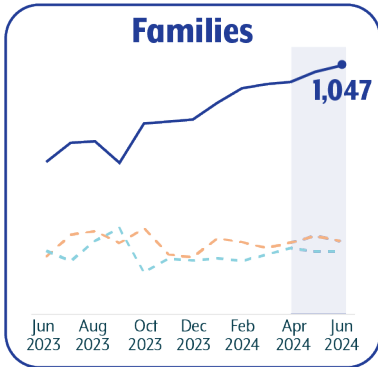


\*Maricopa County demographic data is from the U.S. Census Bureau's American Community Survey 2022 1-year estimates

# Subpopulations

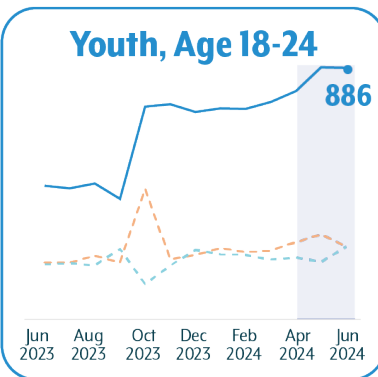
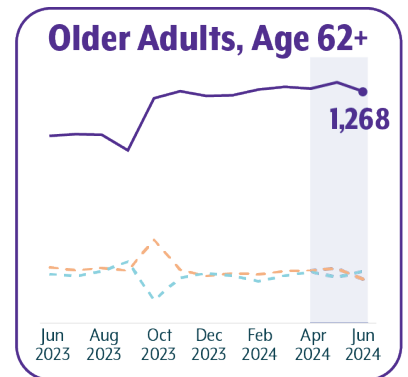
**Legend** *solid line* Actively Homeless Households *--- Inflow* *- - - Outflow* **Current Quarter**

The following section shows trends for the past year by specific subpopulations. The charts show number of households experiencing homelessness as well as inflow and outflow for each subpopulation. **Note:** As mentioned on page 1, the steep increases in actively homeless households from September to October 2023 are due to a change in the outreach policy.



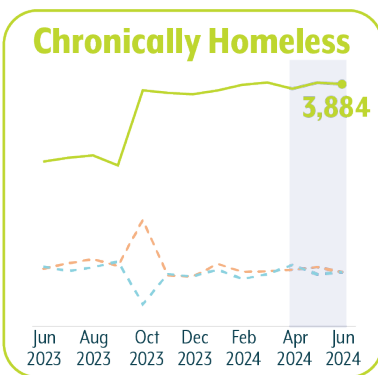
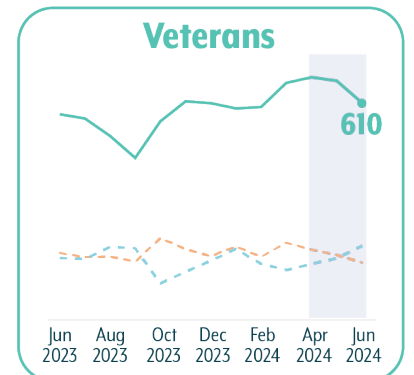
**The number of actively homeless families increased this quarter, starting in April at 979 households and ending in June at 1,047 households.** This is a 7% increase from April to June. The analysis on this page shows number of households, but the total number of people in actively homeless families for April was 3,657. The number of people in families was 3,848 in May, and 3,969 by the end of the quarter in June.

**The number of older adult (ages 62 years and older) households saw a slight decrease this quarter, dropping 1% from April to June of 2024.** The inflow and outflow of older adult households experiencing homelessness also stayed relatively steady this quarter with a slight increase in outflow and slight decrease in inflow..



**Youth ages 18-24 are considered a vulnerable population, and the number of youth households increased 10% this quarter from April to June.** The inflow of youth slightly decreased from 261 in April to 245 youth households entering the system in June. The outflow of youth households increased from 206 in April to 245 youth households in June.

**The number of veteran households experiencing homelessness decreased 11% this quarter, starting in April at 682 and ending in June at 610 veteran households.** The inflow of veteran households decreased 18% this quarter from April to June, while the outflow of veteran households increased by 32%.



**The number of households that meet the chronic homelessness definition increased this quarter starting at 3,809 in January and ending with 3,884 in March.** Inflow of chronically homeless households dropped 5% within the quarter, while outflow of chronic households leaving the system decreased by 12%.

*The HUD definition of chronic homelessness is: (1) a person who lives in a place not meant for human habitation, Safe Haven, or Emergency Shelter, (2) has a disability, and (3) has been homeless continuously for one year OR four or more times homeless in the last three years, where the combined length of time homeless is at least 12 months. When a head of household meets this definition, all household members are counted as chronically homeless.*

# System Performance Measures

System Performance Measures are a selection of criteria used by Department of Housing and Urban Development (HUD) to evaluate how local Continua of Care are performing. The System Performance Measures interactive dashboard includes each of the seven system performance measures and can be accessed at [azmag.gov/CoC-SPM](http://azmag.gov/CoC-SPM). The yearly data included on this dashboard is based on the federal fiscal year (October 1 through September 30) with each quarter breakout for the last year.



## New and Closed Projects in the Past Year

July 2023 through June 2024

| Program Type                 | New Projects | Closed Projects |
|------------------------------|--------------|-----------------|
| Emergency Shelter            | 16           | 10              |
| Transitional Housing         | 7            | 2               |
| Rapid Re-Housing             | 11           | 11              |
| Permanent Supportive Housing | 1            | 3               |
| Other Permanent Housing      | 3            | 4               |
| <b>Total</b>                 | <b>38</b>    | <b>30</b>       |

## Snapshot of Clients Served by Program Type

**31,948**  
people experiencing homelessness\*  
in the past year  
Jul 2023 - Jun 2024

### Clients Served in the Month\*\*

| Program Type                 | June 2024 |
|------------------------------|-----------|
| Emergency Shelter            | 3,658     |
| Transitional Housing         | 987       |
| Rapid Re-Housing             | 1,540     |
| Permanent Supportive Housing | 4,761     |
| Other Permanent Housing      | 203       |

**Notes:**

\*People experiencing homelessness includes clients in outreach, shelter, and transitional housing whose homelessness is not resolved.

\*\*Clients Served is a total count by program type, may include duplicate client counts across programs.

**Special thanks to** Solari's Homeless Management Information System (HMIS) team for collecting the data and the Maricopa Regional Continuum of Care for their feedback on and support of this analysis.  
For more information, contact Cleo Warner at [cwarner@azmag.gov](mailto:cwarner@azmag.gov).